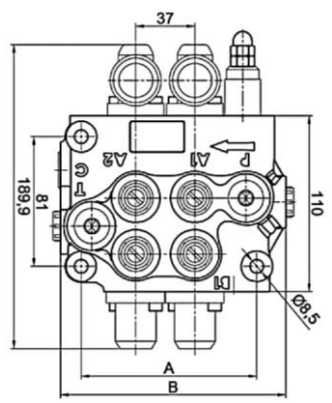


COMANDOS HIDRAULICOS

Comandos monobloque en hierro fundido especial, diseñada en un tamaño mínimo para asegurar una fácil aplicación sin disminuir la resistencia a altas presiones de operación.

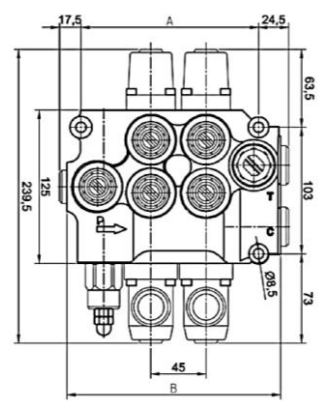


MODELO 45 LT



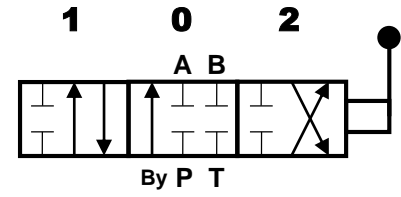
| TIPO | A (mm) | B (mm) |
|------------|--------|--------|
| 1 Palanca | 73 | 104 |
| 2 Palancas | 110 | 141 |
| 3 Palancas | 147 | 178 |
| 4 Palancas | 184 | 215 |
| 5 Palancas | 221 | 252 |
| 6 Palancas | 258 | 289 |

MODELO 80 LT

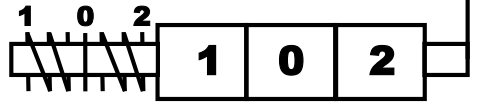


| TIPO | A (mm) | B (mm) |
|------------|--------|--------|
| 1 Palanca | 100 | 129,5 |
| 2 Palancas | 145 | 174,5 |
| 3 Palancas | 190 | 219,5 |
| 4 Palancas | | |
| 5 Palancas | | |
| 6 Palancas | | |

ESQUEMA DEL CIRCUITO



ESQUEMA PALANCA DE MANDO



MODELO 45 LT

| CODIGO | TIPO | ROSCA | PRESION |
|----------|------------|---------|---------|
| AMA 0085 | 1 Palanca | 3/8 BSP | 180 BAR |
| AMA 0086 | 2 Palancas | 3/8 BSP | 180 BAR |
| AMA 0087 | 3 Palancas | 3/8 BSP | 180 BAR |
| AMA 0255 | 4 Palancas | 3/8 BSP | 180 BAR |
| AMA 0257 | 5 Palancas | 3/8 BSP | 180 BAR |
| AMA 0259 | 6 Palancas | 3/8 BSP | 180 BAR |

MODELO 80 LT

| CODIGO | TIPO | ROSCA | PRESION |
|----------|------------|---------|---------|
| AMA 0252 | 1 Palanca | 1/2 BSP | 180 BAR |
| AMA 0253 | 2 Palancas | 1/2 BSP | 180 BAR |
| AMA 0254 | 3 Palancas | 1/2 BSP | 180 BAR |
| AMA 0256 | 4 Palancas | 1/2 BSP | 180 BAR |
| AMA 0258 | 5 Palancas | 1/2 BSP | 180 BAR |
| AMA 0260 | 6 Palancas | 1/2 BSP | 180 BAR |